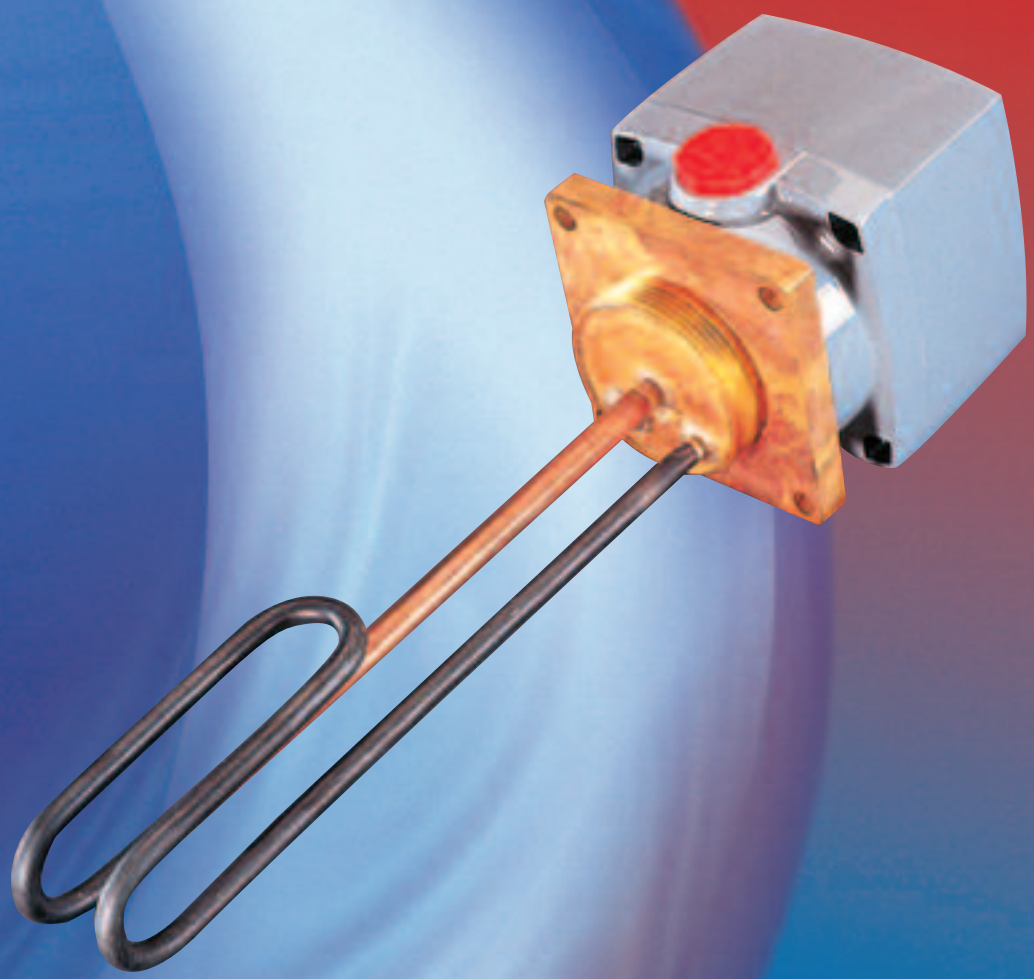


SANTON

Immersion Heaters

Industrial Electrical Immersion Heaters

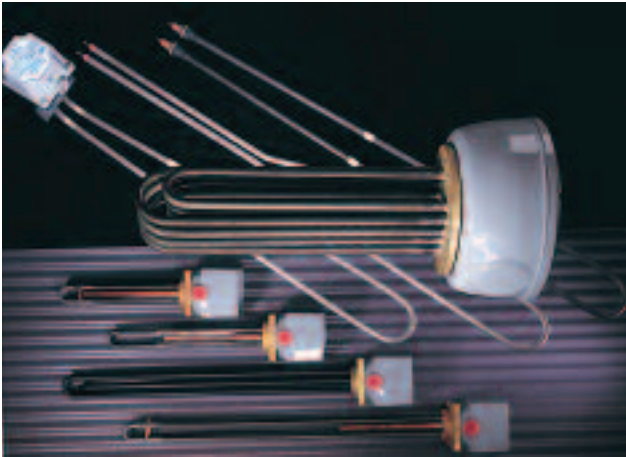
Immersion Heaters



Immersion Heaters

Industrial Electrical Water Heaters

Santon is a leading manufacturer of industrial immersion heaters. It supplies elements for use in commercial and industrial environments covering the heating of water, oil and other solutions. Whatever the application, Santon is able to provide the answer.



Water

Santon manufactures a wide range of immersion heaters for heating water in commercial and industrial environments. Two element sheath materials are supplied to cater for all water conditions - Superloy and Titanium. All Industrial Immersion Heaters are covered by a full 12 month guarantee. These heaters are supplied with a factory-fitted stem type thermostat.



A variety of fixing methods cover all conceivable installations, with loadings from 2.0kW available on a 2¼" BSP head, to 54kW available on a flanged fixing. Applications can vary from car wash machines to industrial calorifiers and swimming pool heaters. When selecting which immersion heater is required, it is advisable to use the longest element that will fit into the vessel being heated. This ensures that heat dissipation is maximised and keeps the watts density of the element to a minimum, which prolongs element life.

Oils

Great care needs to be taken when selecting an immersion heater for oil and full details on the oil type, viscosity, etc. should be obtained from the oil manufacturer. Advice should be sought as to the most suitable watts density output rating permissible with the oil.



For the majority of applications the electrical loading per unit surface area of the immersed heating element is important and a special range designed for use in oil is required. If the correct rating is not used rapid breakdown of the immersion heater can occur with serious consequences to the industrial process concerned.

Environments

All Santon heaters are characterised by their ability to withstand the most arduous working conditions and are therefore supplied with terminal enclosures to suit. In the case of the 'M' and 'L' ranges, the immersion heater cover is manufactured in accordance with IP65. All thermostat pockets are made from Superloy.

Custom Built

In a number of applications it is not always possible to fit a standard immersion heater.

Our technical department can give expert advice in the specification and design of a heater to suit individual requirements. The following information will help us to specify the optimum method of heating the solution:-

- Type of fluid to be heated.
- Viscosity of fluid (if applicable).
- Size of tank.
- Lowest initial temperature.
- Maximum working temperature.
- Maximum permissible length of heater element.
- Type of heater fixing required.

For full range details please contact Santon Sales Department.

SANTON

Santon, Hurricane Way,
Norwich, Norfolk, NR6 6EA

SALES Tel: 08700 603263 Fax: 08700 600403
E-MAIL sales@santon.co.uk

SERVICE Tel: 08701 600126 Fax: 08701 600181
E-MAIL santonservice@heateam.co.uk

SPECIFICATION Tel: 01603 420128 Fax: 01603 420229
E-MAIL specifier@santon.co.uk

WEBSITE www.santon.co.uk

The pace of product development is such that we reserve the right to change product specifications without notice. We do, however, strive to ensure that all information in this catalogue is accurate at the time of going to publication.