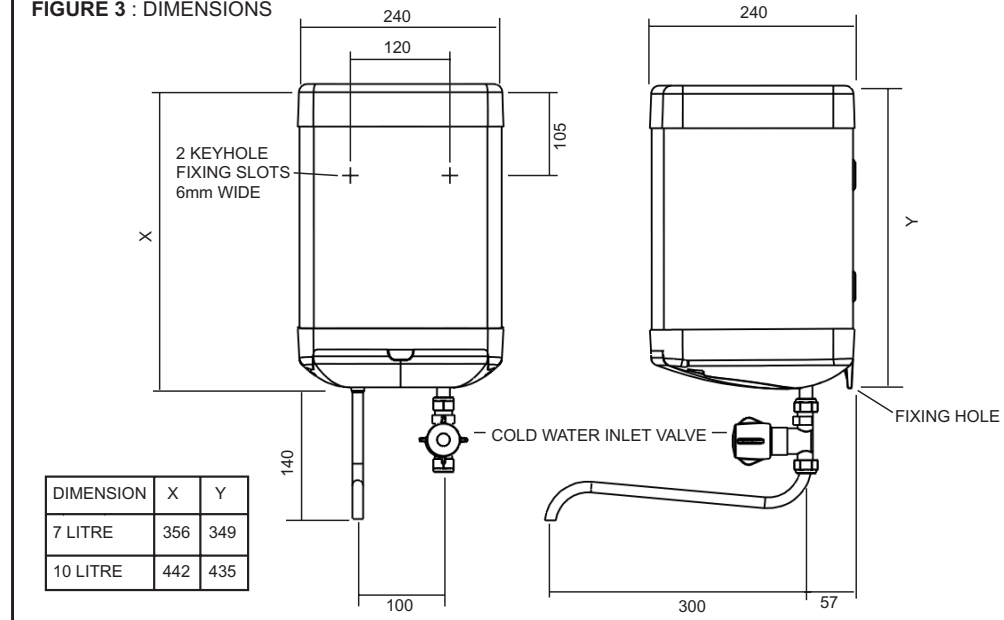


8. FAULT FINDING

SYMPTOM	PROBABLE CAUSE	ACTION
No hot water	1. Check power	Check and replace as necessary.
	2. Faulty cut out	
	3. Faulty thermostat	
	4. Faulty element	
Water too hot /cold	1. Thermostat set to wrong temperature	Adjust thermostat.
	2. Faulty thermostat	Switch off, check and replace.
No water flow	1. Frozen	Switch off electrical power and allow to thaw at room temperature. Do not switch on again until full water flow restored and full checks made for leaks and electrical safety.
	2. No mains supply	Check mains.
Continuous water flow	Faulty valve/tap	Check and replace.

FIGURE 3 : DIMENSIONS



9. SPARE PARTS

In the unlikely event of your Water Heater developing a fault, the following spare parts are available:

Element plate assembly 1.2kW	95 606 934
Element plate assembly 3kW	95 606 763
Element plate assembly gasket (pk of ten)	95 611 708
Over temperature cut-out	95 612 688
Capillary thermostat	95 612 667
Control valve	95 605 857
Spout adaptor	95 604 677
Spout (12") complete with adaptor	95 604 678
Top cover moulding	95 614 272
Terminal cover	95 614 273

10. GUARANTEE

This product is guaranteed against faulty materials and manufacture for a period of 2 years from the date of purchase provided that:

1. The unit has been installed in accordance with the Installation and User Instructions and all relevant Codes of Practice and Regulations in force at the time of Installation, and that all necessary controls and safety valves have been fitted correctly.
2. Any valves and controls are of the Santon recommended type and specification.
3. The unit has not been modified or tampered with in any way, and has been regularly maintained as detailed in the Installation and User Instructions.
4. The unit has been used only for heating potable water.

The unit is not guaranteed against damage by frost, and the inner container with integral immersion heater is not guaranteed against excessive scale build-up.

This Guarantee in no way affects the statutory rights of the consumer.

The policy of Santon is one of continuous product development and, as such, we reserve the right to change specifications without notice.

11. ENVIRONMENTAL INFORMATION

Santon products are manufactured from many recyclable materials.

At the end of their useful life they should be disposed of at a Local Authority Recycling Centre in order to realise the full environmental benefits.

Insulation is by means of CFC-free polyurethane foam.

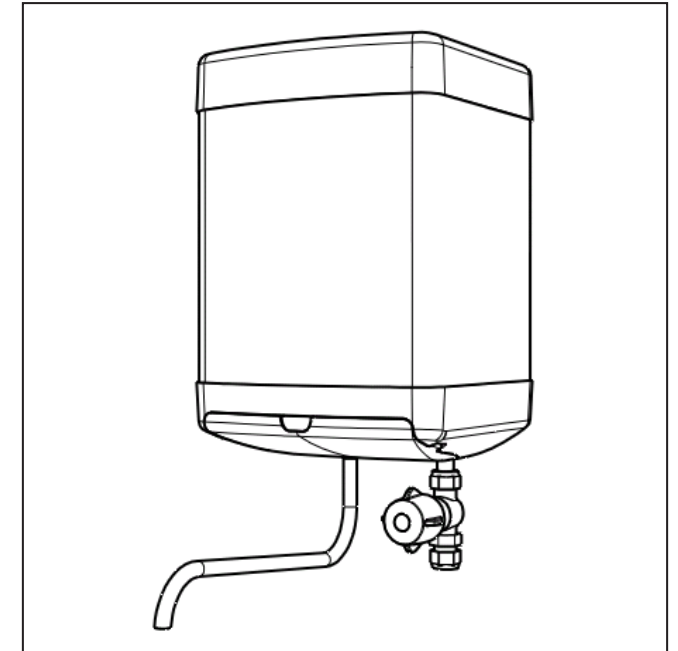
SANTON

Hurricane Way,
Norwich,
Norfolk, NR6 6EA.
www.santon.co.uk
A member of Baxi Group Ltd.

Sales Tel: (01603)420130
Sales Fax: (01603)420149
Sales Email: sales@santon.co.uk
Service Tel: (01603)420347
Service Fax: (01603)420349
Service Email: service@santon.co.uk

SANTON

Installation and User Instructions Aquarius Oversink Vented Water Heaters Models: A7/3, A7/1, A10/3, A10/1.



Please read and understand these instructions before starting work.
Please leave this leaflet with the user following installation

PACK CONTENTS

Heater, Fixing screws and plugs, Spout, Valve
Installation and User Instructions.

WARNING

This water heater must only be installed by qualified persons.

36005792 Issue 2.

1. INSTALLATION

1. Inlet must always be on the right.
2. The outlet of this water heater acts as a vent and must not be blocked or restricted in any way.
3. Use only Santon open outlet spouts.

2. POSITIONING THE WATER HEATER

1. Select a suitable site but check that:
 - a) There is enough clearance under the heater to allow removal of the element plate (210mm).
 - b) When using the outlet spout, it will swing over the sink (or sinks) to be supplied.
 - c) There are no hidden services where the wall is to be drilled.
2. Mark the position of the fixing holes (as shown in Fig. Three).
3. Drill and plug the hole positions.
4. Screw in the top two screws leaving heads 3mm from the wall.
5. Hang the heater on the two top screws.
6. Screw in bottom screw to secure heater.

3. PLUMBING REQUIREMENTS

The water heater is designed to be connected directly to the mains via the valve provided. It is recommended that a WRAS listed isolating valve (not supplied) be fitted in the water supply pipe to the heater to allow for servicing.

4. REMOVAL AND FITTING OF TERMINAL COVER

To remove the terminal cover use a large flat bladed screwdriver to relieve the snaps located towards the front of the terminal cover at either side. Gripping the cover at the front, pull downwards.
To fit the cover, locate the hinge at the back. Slide the snaps into place. Apply pressure to the front of the cover pushing it backwards and upwards until it snaps securely in place.

5. SPOUT AND VALVE

1. Connect the control valve supplied to the inlet pipe on the water heater.
 2. Connect the cold water main to the control valve using 15mm outside diameter pipe (either copper to BS EN 1057 or stainless steel to BS 4127).
 3. Push the outlet spout directly into the outlet fitting.
- TO REMOVE OUTLET SPOUT
1. Remove terminal cover.
 2. Push white ring upwards towards body of fitting.
 3. Pull spout downwards.

6. ELECTRICAL REQUIREMENTS (REFER TO FIGURE 2 - WIRING DIAGRAMS)

- WARNING: THIS APPLIANCE MUST BE EARTHED.
 - CONNECT ONLY TO 230 / 240V AC SUPPLY.
 - NOMINAL CROSS SECTION OF SUPPLY CABLE MUST BE AT LEAST 1.5mm².
 - A DOUBLE POLE ISOLATING SWITCH WITH A CONTACT SEPARATION OF AT LEAST 3mm IN EACH POLE MUST BE INCORPORATED IN THE SUPPLY.
 - ELECTRICAL INSTALLATION MUST CONFORM TO THE CURRENT I.E.E. WIRING REGULATIONS.
1. Remove terminal cover.
 2. Strip the outer sheath and insulation on the cable to the required lengths, making sure the outer sheath of the cable will be held in the cable grip when the connections are made.
 3. Loosen the top screws securing the cable grip.
 4. Pass the cable underneath the cable grip and through the top moulding.
 5. Make the connections to the terminal block as follows:
 - Live (brown or red wire) to terminal marked "L"
 - Neutral (blue or black wire) to terminal marked "N"
 - Earth (green or green/yellow wire) to terminal marked \perp
 6. Secure the cable in the cable grip by tightening the two screws.
 7. Set the adjustable thermostat by rotating the control to the required temperature.
It is recommended that it is set to lowest acceptable temperature to meet user requirements.
This will minimise the risk of scalding and reduce the level of scaling in hard water areas.
 8. Replace terminal cover.

7. OPERATION

DO NOT SWITCH ON HEATER UNTIL IT IS FILLED WITH WATER

1. Fill with water by opening valve and leaving open until a full bore of water flows from the outlet.
2. Close valve and switch on water heater at double pole isolating switch. The heater will heat water to the temperature set on the thermostat.
3. Check water is heating correctly.

7 litre 1.2kW	- after 10 mins water temperature will increase by 20°C
7 litre 3kW	- after 10 mins water temperature will increase by 60°C
10 litre 1.2kW	- after 10 mins water temperature will increase by 15°C
10 litre 3kW	- after 10 mins water temperature will increase by 40°C
4. Pass instruction leaflet to user and draw his attention to the following two statements:
 - a) DO NOT USE HEATER IF THE WATER IS THOUGHT TO BE FROZEN
Switch off immediately at the isolating switch if the water does not flow freely.
Any damage resulting from freezing will not be covered by the guarantee.
 - b) DURING HEATING THE SPOUT WILL DRIP
This is due to the expansion of water inside the heater and is normal for heaters of this type. It does not indicate that the valve is faulty and overtightening of the valve can result in damage.

FIGURE 1: INTERNAL LAYOUT

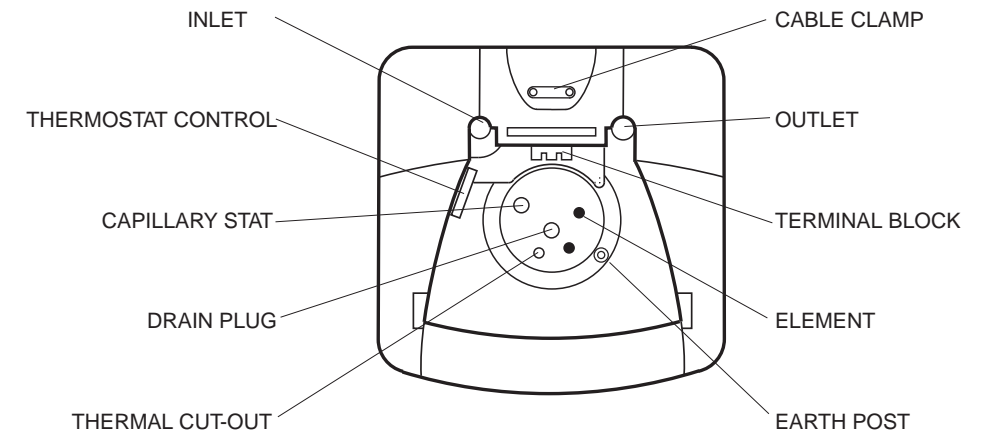


FIGURE 2: WIRING DIAGRAM 'AC' ONLY.

